

TOPIC-WISE QUESTION BANK WITH MODEL QUESTION PAPERS ENGLISH-B



Edutips

CLASS XII
SEMESTER IV



Edutips



West Bengal Council of Higher Secondary Education

TOPIC-WISE QUESTION BANK WITH MODEL QUESTION PAPERS

ENGLISH-B

SEMESTER-IV



West Bengal Council of Higher Secondary Education

Vidyasagar Bhavan, 9/2, Block DJ, Sector-II, Salt Lake, Kolkata - 700 091

Website : www.wbchse.wb.gov.in

ENGLISH-B

Class XII Semester 4

Question Pattern [Short Answer Questions, Descriptive Questions]

Marks : 40

TOPIC	SHORT ANSWER TYPE QUESTIONS (2/3 marks)	DESCRIPTION TYPE QUESTIONS (5/6/10 marks)	TOTAL
Prose	2x2=4 [2 OUT OF 4 QUESTIONS]	1x6=6 [1 OUT OF 2 QUESTIONS]	10
Verse	2x2=4 [2 OUT OF 4 QUESTIONS]	1x6=6 [1 OUT OF 3 QUESTIONS]	10
Drama	—	1x5=5 [1 OUT OF 2 QUESTIONS]	05
Non Textual Grammar	1x2=2 [1 OUT OF 2 QUESTIONS] 1x3=3 [1 OUT OF 2 QUESTIONS]	—	10
Writing Skill : Essay (150 words) OR Drafting email (75 words) & Blog Writing (75 words)	—	1x10=10 [1 OUT OF 2 QUESTIONS] 1x5 + 1x5=10 [1 OUT OF 2 QUESTIONS FOR EACH]	10
TOTAL	13	27	40

ENGLISH-B**Class XII Semester 4****MODEL QUESTION PAPER SET 1****Full Marks: 40****Section- A (for 2 marks questions) [10]**

1. Answer any two questions out of four questions. 2x2=4
- A) Why was Alice getting tired sitting by her sister's side on the riverbank?
- B) What was Alice's opinion on books without pictures or conversations?
- C) What according to the Tsar could ensure his success in every endeavour?
- D) Describe the hermit's physical features.
2. Answer any two questions out of four questions. 2x2=4
- A) What are the four main themes that are explored in "Hawk Roosting"?
- B) In Shakespeare's *Sonnet 73*, what is the significance of life's transience?
- C) What is the role of visual imageries in Carl Dennis' 'The Greenhouse Effect'?
- D) What is the symbolic significance of the hawk in 'Hawk Roosting'?
3. Answer any one question out of two questions [1x2=2]
- A) I don't think I will be able to make it. I missed the bus.
- (Combine the given sentences to form a Complex Sentence)

ENGLISH-B

Class XII Semester 4

- B) Nobody knew where to go, so we asked some random people for directions to the hills.

(Split into two simple sentences)

Section-B [for 3 marks questions].

[1x3=3]

4. Answer any one question out of two questions.

Fill in the blanks with suitable articles and preposition.

- A) _____ large house _____ the south side of Grosvenor Square was all ablaze _____ ten o'clock.
- B) Alice said, "The train left as soon as I reached the station".
Alice said that _____ sooner did she reach the station _____ the train _____.

Section-C (for 5 marks questions)

5. Answer any one question out of two questions.

[1x5=5]

- A) How is death depicted in *Riders to the Sea*?
- B) Comment on the role of the sea in JM. Synge's *Riders to the Sea*.

Section-D (for 6 marks questions)

6. Answer any one question out of two questions.

[1x6=6]

- A) Comment on the elements of curiosity and confusion in 'Down the Rabbit-Hole'.

ENGLISH-B**Class XII Semester 4**

- B) Why does the Tsar decide to consult the hermit? Mention three distinct features of the hermit.

7. **Answer any one out of three questions.** [1x6=6]

- A) 'And the earth's face upward for my inspection' – Comment on the idea of authority as expressed in the given line with reference to the context.
- B) Comment on the metaphorical use of the bare branches of autumn in *Sonnet 73*.
- C) Describe the central ideas of the poem, "The Greenhouse Effect".

Section-E [for 10 marks questions]

8. **Answer any one question out of two questions.** [1x10]

- A) Write an essay on any one of the two given topics (in about 150 words):

i) **"The impact of social media on societal interaction".**

(outline: social media- its various forms- age group of the population more invested in social media-neglecting reading habits, out-door games-seclusion- lack of socialization)

ii. **"The advantages of learning a new language."**

[outline: language as a basic component of human interaction - the joy of learning something new-enhanced communication skills - a gateway to a new culture]

Or

ENGLISH-B**Class XII Semester 4**

B) Write an email (in about 75 words) on any one of the two given essay topics, using the following points:

iii. You have just completed your higher secondary education. Email to the Principal of ABC College, Kolkata enquiring about their admission dates for undergraduate programmes.

[Mention your year of taking the H.S. Examination-Subject of interest for undergraduate studies preference of college based on location, faculty, etc.]

iv. Email to the Editor of *The Telegraph* expressing your views regarding a news article on pollution due to firecrackers, published in the paper.

[Mention the date of the article published whether you agree/ disagree with the views expressed in the article, your reasons for agreement/disagreement, your opinion]

AND

v. Write a blog (in about 75 words) on any one of the following topics, using the given points:

a) **‘The coming of migratory birds in Kolkata’.**

[Mention the season when migratory birds are seen in Kolkata – why do they migrate – the joy of birdwatching – add to the biodiversity – temporary stay].

b) **‘Kolkata Book Fair’.**

[Mention the month – the duration of the Fair – why is it of interest – its distinctiveness]

Class 12 **ENGLISH** 4TH Semester Suggestion Notes সংগ্রহ করুন

সম্পূর্ণ PDF ইবুকটি
পেয়ে যান **EduTips**
স্টোর থেকে!



SCAN ME



**LIMITED
OFFER**



store.edutips.in



Contact Us

+91 8062179966



CALL US

+91 9907260741

ছাত্র-ছাত্রীদের জন্য
মাত্র 40 টাকায় সংগ্রহ
করে নিতে পারবে!

ENGLISH-B**Class XII Semester 4****MODEL QUESTION PAPER II****Full Marks: 40****Section- A [for 2 marks questions]****[10]****1. Answer any two questions out of four questions.****[2x2=4]**

- A) Give the metaphorical meaning of the title 'Down the Rabbit-Hole'.
- B) Describe the rabbit hole.
- C) Who is the author of "Three Questions" and when was it first published?
- D) How did the Tsar take care of the wounded man?

2. Answer any two questions out of four questions.**[2x2=4]**

- A) 'There is no sophistry in my body'

Explain with reference to context.

- B) 'To love that well which thou must leave ere long'

Explain with reference to context.

- C) 'And the green belts begin to slide closer to the poles'

Explain with reference to context.

- D) What is the meaning of 'no falsifying dream'?

ENGLISH-B**Class XII Semester 4**

3. Answer any one question out of two questions [1x2=2]

A) Taking pity on the mouse, the magician turned it into a cat.

(Split into two Simple Sentences)

B) Tina had to present the paper today. Nancy volunteered to do it.

(Join the two sentences to form a compound sentence)

Section-B [for 3 marks questions].

4. Answer any one question out of two questions. [1x3=3]

Fill in the blanks with suitable articles and preposition.

A) Epigraphy had been a lively political _____ religious activity _____
the subcontinent _____ the advent of Indian Literature in the final centuries
B.C.E.

OR

B) Rohan said, "We represented our school in the Interschool Football Championship
and we are the winners."

Rohan said that they _____ represented _____ school in the Interschool
Football Championship and they _____ the winners.

ENGLISH-B**Class XII Semester 4****Section-C [for 5 marks questions]**

5. Answer any one question out of two questions. [1x5=5]
- A) How does Maurya achieves peace at the end of the play *Riders to the Sea*?
- B) Discuss the Biblical significance of the title, *Riders to the Sea*.

Section-D [for 6 marks questions]

6. Answer any one question out of two questions. [1x6=6]
- A) How did Alice feel when she saw the beautiful garden through the little door?
- B) Describe the events leading to the encounter between the Tsar and the wounded man. Explain why the man initially sought revenge. Why did his perspective change by the end of the story?
7. Answer any one out of three questions. [1x6=6]
- A) The actions and the physical features of the hawk is a symbolic representation of its place within a larger and brutal natural order. Discuss.
- B) What kind of love has been discussed in *Sonnet 73*?
- C) Discuss the interconnectedness of emotional and environmental landscapes in Carl Dennis' 'The Greenhouse Effect'.

ENGLISH-B**Class XII Semester 4****Section-E [for 10 marks questions]**

8. Answer any one question out of two questions. [1x10]

A) Write an essay on any one of the two given topics (in about 150 words):

i. 'Festivals must be celebrated responsibly

[outline: festivals celebrate unity in diversity — reflection of our culture — name some of the festivals that are celebrated — lack of responsibility can lead to sound and air pollution — responsible celebration enhances the joy and happiness).

ii. "Reading biographies"

[outline: Describe what is a biography — window to the life of inspirational figures — insightful anecdotes — experience to face and overcome challenges).

Or

B) Write an email (in about 75 words) on any one of the two given essay topics, using the following points:

iii. To the Principal of your school requesting to arrange a visit to the Birla Planetarium.

[Mention your class — total number of students in your class — reason for the visit — how will it be useful for you).

iv. To the store owner of a book shop to place the order of new books.

[Mention the subject — the number of books required — the approximate time in which you want the books to be delivered — to ensure that the books are in good condition].

AND

ENGLISH-B

Class XII Semester 4

v. Write a blog (in about 75 words) on any one of the following topics, using the given points:

a) **The benefits and drawbacks of e-learning**

[Mention what is e-learning? — how is it different from conventional classroom learning? — benefits of e-learning — drawbacks of e-learning — need for a balanced approach]

b) **The joy of travelling**

[outline: a deviation from monotony — exploration of a new landscape — introduction to a new culture — change in perspective]

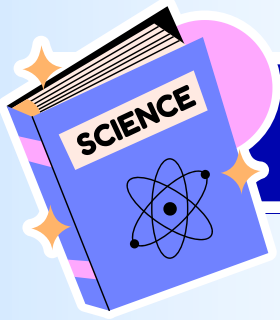
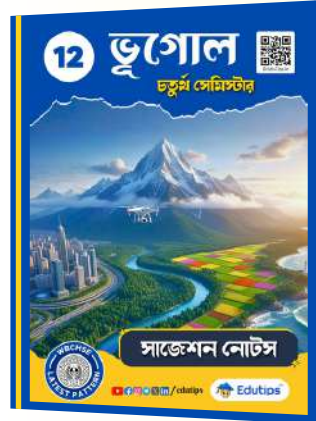
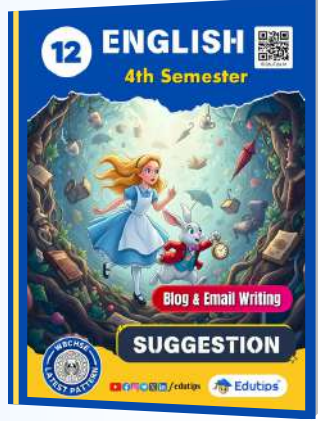


উচ্চমাধ্যমিক 4th সেমিস্টার



PREMIUM

HS 2026 পরীক্ষার সেরা প্রস্তুতি সাজেশন



বোর্ড পরীক্ষা সাজেশন & প্র্যাকটিস

Science বিভাগ: Physics, Chemistry, Math, Biology



CALL US

+91 8062179966



Contact Us

+91 9907260741



© EduTips.in

এখনই সংগ্রহ করুন

store.edutips.in



**ENGLISH-B****Class XII Semester 4****Higher Secondary Model Question 2:2026****Section-A (for 2 marks questions)****[5x2=10]****A. Answer any two questions out of four questions: 2x2=4**

- A) How did Alice manage to see cupboards, bookshelves, and jars while falling?
- B) Why couldn't Alice go through the little door even though she had the key?
- C) Whom did the king first consult to find the answers?
- D) Why did the wounded man want to kill the king?

2. Answer any two questions out of four questions: 2x2=4

- A) What does the hawk mean when it says, it "rehearses" in the sun in "Hawk Roosting"?
- B) What does fire symbolize in the third quatrain of "That Time of the Year (Sonnet 73)"?
- C) How does the final couplet reinforce the poem's central message in "That Time of the Year (Sonnet 73)"?
- D) How does the poem reflect concern for future generations in the poem "The Greenhouse Effect"?

3. Answer any one question out of two questions: 1x2=2

- A) The boy walked along the quiet hill road. He noticed the scent of wildflowers in the air. A sudden drizzle began, making the path slippery. (Join into complex sentence)

ENGLISH-B

Class XII Semester 4

- B) Bimala felt torn between her loyalty to her husband and the excitement of nationalist politics, which stirred her imagination and challenged her values. (Split into two simple sentences.)

Section-B (for 3 marks question)

1x3=3

4. Answer any one question out of two questions:

Fill in the blanks with suitable articles and prepositions

- A) The mayor addressed _____ press conference yesterday, emphasizing the city's commitment _____ reducing traffic congestion. He cited recent studies _____ urban planning and public transport efficiency to support new policies.
- B) Pip walked through _____ foggy streets of London, thinking _____ the mysterious benefactor who had changed his life. He passed several shops _____ advertisements for new books and trinkets gleaming in the dim light.

Section -C [for 5 marks question]

1x5=5

5. Answer any one question out of two questions:

- A) Describe Maurya's character and her response to the tragedies that befall her family in "Riders to the Sea".
- B) What role do superstition and religion play in "Riders to the Sea"?

ENGLISH-B

Class XII Semester 4

Section-D [for 6 marks questions]

[2x6=12]

6. Answer any one question out of two questions: 1x6=6
- A) How does Lewis Carroll blend fantasy and reality in “Down the Rabbit Hole”?
- B) Describe the role of the hermit in the story “Three Questions”. How does he guide the king towards true wisdom?
7. Answer any one question out of three questions: 1x6=6
- A) Explain the hawk’s attitude toward life and death in the poem “Hawk Roosting” by Ted Hughes. How does it reflect natural order?
- B) Explain how Shakespeare uses the imagery of seasons in *Sonnet 73* to convey aging and mortality.
- C) What feelings does the poem, “Greenhouse Effect” evoke in the reader regarding nature and pollution?

Section-E for 10 marks questions

1x10=10 / 2x5=10

8. Answer any one question out of two questions:
- A) (i) Write an essay (in about 150 words) on “*Urbanization and the Loss of Natural Spaces*”, using the following outlines:
- [Urban growth and deforestation — shrinking green belts — pollution and habitat loss — climate imbalance — biodiversity decline — mental health impact — need for sustainable urban planning.]

ENGLISH-B

Class XII Semester 4

- (ii) Write an essay (in about 150 words) on the causes of “*Urban flooding in Indian Metro cities*”, using the following outlines:

[Introduction-Causes-Effects/Consequences-Examples-Solutions-Conclusion]

- B) Write a blog (in about 75 words) on any one of the following topics, using the following points:

- (i) “**Comfort vs. Climate: The Cost of Modern Living**”

[Human pursuit of comfort and convenience in the modern age. — Technological progress vs. environmental degradation — Overreliance on electricity, air conditioning, and vehicles — increased carbon emissions — Psychological comfort vs. ecological discomfort — moral contradiction — Need for sustainable living and responsible consumption.]

- (ii) “**Post-Pandemic Travel Trends: The New Normal in Tourism**”

[Rise of domestic tourism — Focus on hygiene and safety — Preference for nature destinations — Digital booking growth — Sustainable and slow travel gaining popularity — Contactless technology in hospitality — Increased demand for personalized experiences — Health certificates and travel insurance essential — Revival of local economies through responsible tourism]

AND

Write an email (in about 75 words) on any one of the following topics, using the following points:

- iii) Email to the Manager of an Electronics Store reporting a malfunctioning refrigerator delivered to your home.

ENGLISH-B

Class XII Semester 4

[Mention date of purchase and model name — Describe the issue (not cooling, strange noise, etc.)—Request inspection, replacement, or refund — Attach invoice or delivery details.]

- iv) Email to the Examination In-charge requesting rechecking of answer sheets
(Student details (name, class, roll number) — Mention exam name and subject —
Request rechecking of answer sheets — Reason for request)

EduTips

ENGLISH-B

Class XII Semester 4

Higher Secondary Model Question 1:2026

Section-A (for 2 marks questions)

[5x2=10]

1. Answer any two questions out of four questions:

2x2=4

- A) What was unusual about the White Rabbit that caught Alice's attention?
- B) How does Lewis Carroll use fantasy to introduce readers to Wonderland?
- C) What were the three questions that the king wanted answers to?
- D) According to the hermit, what is the most important time?

2. Answer any two questions out of four questions:

2x2=4

- A) How does the hawk view the world below it in "Hawk Roosting"?
- B) What imagery is used in the second quatrain of the poem "That Time of the Year (Sonnet 73)"?
- C) What does the "bare ruined choirs" symbolize in the poem in "That Time of the Year (Sonnet 73)"?
- D) How does the poet describe the greenhouse effect in the poem "The Greenhouse Effect"?

3. Answer any one question out of two questions:

1x2=2

- A) The rain stopped. We decided to go for a walk. The air was fresh and cool. (Join into complex sentence)

ENGLISH-B

Class XII Semester 4

- B) Meursault felt no sorrow at his mother's funeral because he could not understand why society demanded emotions he did not feel. (Split into two simple sentences.)

Section-B (for 3 marks question)

1x3=3

4. Answer any one question out of two questions:

Fill in the blanks with suitable articles and prepositions

- A) Despite _____ growing awareness about climate change, few people take meaningful action _____ a global scale. Scientists emphasize the need for collaboration between nations, but progress often stalls due to differences _____ policy and priority.
- B) At _____ first ball in Meryton, Elizabeth Bennet's quick wit immediately attracted attention, though Mr. Darcy appeared indifferent _____ her charms. Later, his pride gave way to admiration, revealing the tension _____ manners and morals in Austen's world.

Section-C (for 5 marks question)

1x5=5

5. Answer any one question out of two questions:

- A) Explain the significance of the play's title, "Riders to the Sea"
- B) Discuss the role of the 'sea' in the play as a symbol of nature and fate.

Class 12 **ENGLISH** 4TH Semester Suggestion Notes সংগ্রহ করুন

সম্পূর্ণ PDF ইবুকটি
পেয়ে যান **EduTips**
স্টোর থেকে!



SCAN ME



**LIMITED
OFFER**



store.edutips.in



Contact Us

+91 8062179966



CALL US

+91 9907260741

ছাত্র-ছাত্রীদের জন্য
মাত্র 40 টাকায় সংগ্রহ
করে নিতে পারবে!

ENGLISH-B

Class XII Semester 4

Section-D (for 6 marks questions)

[2x6=12]

6. Answer any one question out of two questions:

1x6=6

- A) Describe Alice's experience of falling down the rabbit hole. What thoughts and feelings does she have during the fall?
- B) Describe the three questions that troubled the king and explain why he wanted their answers.

7. Answer any one question out of three questions:

1x6=6

- A) How does Hughes explore the relationship between predator and prey in "*Hawk Roosting*"?
- B) Discuss the theme of mortality and the passage of time in William Shakespeare's "*Sonnet 73*".
- C) How does Carl Dennis portray the contrast between human comfort and environmental harm in the poem "*The Greenhouse Effect*"?

Section-E (for 10 marks questions)

1x10=10 / 2x5=10

8. Answer any one question out of the given questions

- A) i) Write an essay (in about 150 words) on the "*Durga Puja Carnival in Kolkata*", using the following outlines, Introduction, Significance – Preparations & Decorations – Carnival Atmosphere – Cultural & Social Importance – Modern Trends & Innovations – Conclusion)

OR

ENGLISH-B

Class XII Semester 4

- ii) Write an essay (in about 150 words) on *Artificial Intelligence and its impact on the Lives of Students* using the following outlines:

[Introduction-Definition of Artificial Intelligence (AI): machines simulating human intelligence-Growing presence in education and student life- AI adapts to individual pace and needs helping differently abled students through voice and vision tools- Over-dependence on technology, reduced critical thinking-Risk of misinformation and plagiarism - AI a powerful ally if used responsibly- Education must balance technology with human values and creativity]

- B) Write a blog (in about 75 words) on any one of the following topics, using the following points

- (i) **“Green Eating: Can Sustainable Diets Heal a Warming World?”**

[Define green eating – eco-friendly, plant-based, low-carbon diets — Industrial agriculture – greenhouse gas emissions, deforestation, *water use* – *Organic farming*, reduced meat and dairy consumption – Healthier lifestyles and reduced disease risk – Small changes in daily food choices – large environmental impact.]

OR

- (ii) **“Fast Food, Slow Death: Environmental Lessons from Our Meals”**

[Rise of fast food culture, symbol of convenience and globalization — Overconsumption leading to obesity, health crises, and resource strain — Packaging waste and plastic pollution from fast food chains — Sustainable eating: local produce, plant-based diets, waste reduction]

AND

Write an email (in about 75 words) on any one of the following topics, using the following points:

ENGLISH-B**Class XII Semester 4**

- (iii) **Email to a Customer Care Executive** complaining about receiving a defective mobile phone ordered online.

[Mention date of purchase and model name — Describe the issue (touch screen not working, phone sound low, apps not opening etc) — Request inspection, replacement, or refund — Attach invoice or delivery details.]

OR

- (iv) **Email to the Controller of Examination** requesting correction of your name's spelling error in the admit card. [Mention exam name, roll number, and incorrect spelling- Provide correct spelling of your name-Attach proof (ID card or registration form)- Request urgent correction before exam date.]

গুরুত্বপূর্ণ আপডেট পরীক্ষার সাজেশন

হোয়াটসঅ্যাপে পেতে



স্ক্রিনশট নিয়ে, Scan করে
জয়েন হয়ে যাও!



edutips.in

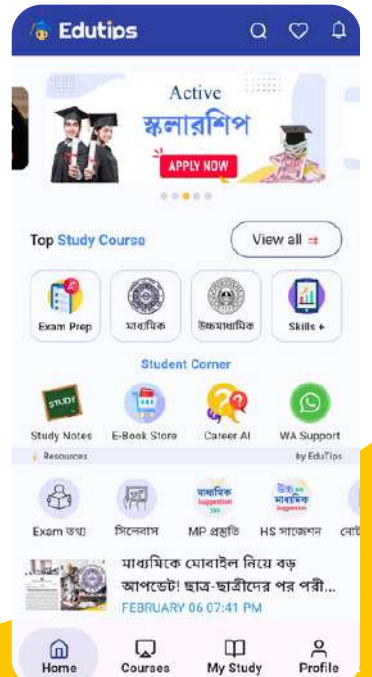


Edutips



@ edutipsbangla

উচ্চমাধ্যমিক সেমিষ্টার প্রস্তুতি, নোট সাজেশন স্টাডি
মকটেস্ট পাবে: **EduTips App** যুক্ত হয়ে যেও!



ENGLISH-B**Class XII Semester 4****Model Question Paper****Section-A [For 2marks questions]****[5x2=10]****1. Answer any two questions out of four questions.****[2x2=4]**

- A. Who was Dinah? What was it fed at tea-time?
- B. What, and how it was written on the small cake?
- C. What was the first question of the Tsar? How was it answered by the learned men?
- D. Where did the hermit live and whom did he only meet?

2. Answer any two out of four questions.**[2x2=4]**

- A. "Now I hold creation in my foot."
Explain with reference to context.
- B. "-I kill where I please-"
Explain with reference to context.
- C. Explain the significance of the phrase "fadeth in the west.. in *Sonnet 73*.
- D. Who are referred to as 'Great Powers' in the poem 'The Greenhouse Effect'?

3. Answer any one question out of two questions.**[1x2=2]**

- A. Join the sentences into a single sentence.
Chameleons change their skin colour. It helps them avoid their enemies.
- B. Split the sentence into two simple sentences:

**ENGLISH-B****Class XII Semester 4**

Nalanda, a large Buddhist monastery, was one of the most acknowledged Mahaviharas of the ancient India.

Section-B**[For 3 marks questions]****[1x3=3]**

4. Answer any one question out of two questions.

Fill in the blanks with proper articles and prepositions:

A. The disappearance of Subhas Chandra Bose _____ August 18, 1945 remains still _____ unsolved mystery. There is no definite evidence of _____ unfortunate plane crash or of Netaji being inside the plane at all.

B. Complete the indirect speech of the sentence by filling in the blanks with appropriate words.

Direct speech: She said to her friend, "Let us have some ice-cream."

Indirect speech: She _____ her friend that _____ should some ice-cream.

Section -C [for 5 marks questions]**[1x5=5]**

5. Answer any one question out of two questions:

A. What are the conflicts brought out in J. M. Synge's 'Riders to The Sea'? 5

B. They all are gone now, and then there isn't anything more that the sea can do to me...."

Who is the speaker? Who are referred to as 'they'? Comment on the ending of the play with reference to this utterance? 1+1+3

ENGLISH-B

Class XII Semester 4

Section-D [For 6 marks questions]

6. Answer any one question out of two questions: [1x6=6]
- A. Why did Alice chase the rabbit? What happened to Alice while running after the rabbit? What did Alice notice while falling down the rabbit hole? 1+2+3
- B. How did the bearded man become the enemy of the Tsar? How did the man want to take revenge? How did the bearded man and the Tsar become friends? 2+2+2
7. Answer any one question out of three questions. [1x6=6]
- A. Bring out the parallelism suggested between the killing instinct of the bird and human behaviour.. 6
- B. Discuss the central idea of *Sonnet 73* by William Shakespeare. 6
- C. What is greenhouse effect? What warning does the poet give us about climate change in the poem 'The Greenhouse Effect'? 2+4

Section-E [For 10 marks questions]

8. Answer any one question out of two questions [1x10=10]
- A. Write an essay on the following topic (150 words)

Global Warming

[Points: What is global warming-causes-impact on our planet-measures and remedies-behavioural changes in micro and macro level needed-use of alternative energy sources-conclusion]

ENGLISH-B**Class XII Semester 4**

OR

Self Employment

[Points: Introduction — skill development — choosing entrepreneurship — using Govt. initiatives — benefits of independence — control over one's schedule — opportunity for leaning — financial freedom — conclusion).

B.

1. Write an email to a dignitary inviting her/him as a guest speaker at your school annual function. (75 words)

OR

Write an email to the course coordinator of language school enquiring her/him for admission to learn a new language. (75 words)

2. Write a blog on addiction to mobile phone among young generation. (75 words)

OR

Write a blog on harmful effects of indiscriminate use of loud speaker. (75 words)

ENGLISH-B

Class XII Semester 4

Model Question Paper**Section-A****[5x2=10]****1. Answer any two questions out of four questions.****2x2=4**

- A. What did Alice notice when she looked at the sides of the well?
- B. Why did Alice decide to eat the cake?
- C. What was the second question of the Tsar?
- D. Why did the Tsar put on simple clothes before meeting the hermit?

2. Answer any two questions out of four questions.**2x2=4**

- A. What does the hawk rehearse and why?
- B. What does the hawk assert as his 'right'?
- C. Comment on the metaphor of autumn for old age in the *Sonnet 73*.
- D. What impact of greenhouse effect will be on the 'tillable land'?

3. Answer any one question out of two questions.**1x2=2**

- A. Join the sentences into a single sentence.

Kunwar Singh was by caste a Thakur. He was the headman of his village.

- B. Split the sentence into two simple sentences.

Nature has created all forms of life with equal compassion.

ENGLISH-B

Class XII Semester 4

Section-B

[1x3=3]

4. Answer any one question out of two questions.

A. Fill in the blanks with proper articles and prepositions.

3

_____ the Bose Institute the great experimenter was our guide. Through all
_____ afternoon we followed him from marvel _____ marvel

B. Complete the indirect speech of the sentence by filling in the blanks with appropriate words.

3

Direct speech: The traveller said to the man, "Where can I get some water?"

Indirect speech: The traveller _____ the man _____ he _____
get some water.

Section-C

[1x5=5]

5. Answer any one question out of two questions.

A. Discuss the role of the sea in 'The Riders to The Sea'.

5

B. How does Maurya react after the death of Bartley? What change do we see in Maurya after the death of Bartley?

3+2

Section-D

[2x6=12]

6. Answer any one question out of two questions.

A. "Alice ventured to taste it"—What did Alice venture to taste? Why did she not readily taste it then? How did it taste? How was the result after Alice tasted it?

1+2+1+2

ENGLISH-B

Class XII Semester 4

- B. What were the three questions that occurred to the Tsar? Why did he need the correct answers to the questions? What did he do when he was not satisfied with the answers of the learned men? 2+3+1

7. Answer any one question out of three questions.

- A. "I sit in the top of the wood, my eyes closed. Inaction, no falsifying dream" -who is referred to as 'I'? What do the 'closed eyes' signify? Why is the 'dream' called 'no falsifying'? 1+2+3
- B. How does the *Sonnet 73* depict the relationship between life, time and death? 6
- C. How does the poet describe the future of cities and suburbs after the impact due to climate change in the poem 'The Greenhouse Effect'? 6

Section-E

[1x10=10]

8. Answer any one question out of two questions.

- A. Write an essay on the following topic(150words) 10

Role of Students in Society

[Points: Introduction – building good habits and moral values – shaping society by exercising knowledge and skill – helping others to solve problems – initiating social works – building proper approaches towards environment – conclusion]

OR



Renewable Energy

[Points: Introduction-increasing environmental degradation-climate change-depletion of conventional fuel energy—solar, wind, Hydro and geothermal becoming more efficient-solution to reduce greenhouse gases-potential for environmental protection-conclusion]

- B. 1. Write an email to the Coordinator of a swimming club asking her/him for the admission procedure. [75words] 5

OR

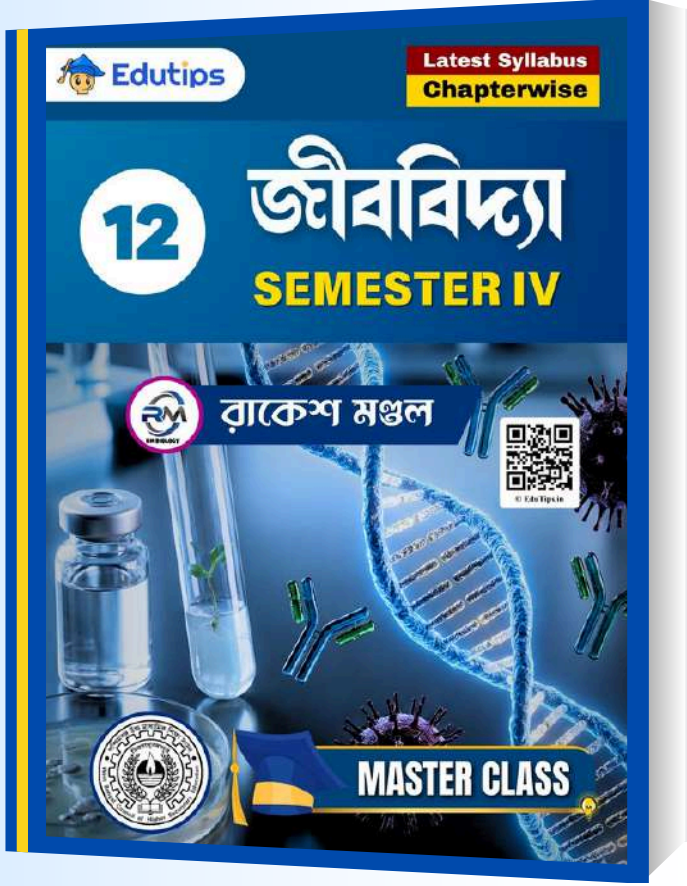
Write an email to the Sales Manager requesting her/him to replace a defective product you recently bought. [75words]

2. Write a blog on the bad effects of eating junk food. [75words]

OR

Write a blog on Practising Yoga and Meditation to Reduce Stress. [75words] 5

Class 12 **বায়োলজি** 4th সেমিস্টার মাস্টার ক্লাস Notes সাজেশন!



সম্পূর্ণ PDF ইবুকটি
পেয়ে যান **EduTips**
স্টোর থেকে!

SCAN ME



**LIMITED
OFFER**



store.edutips.in



Contact Us

+91 8062179966



CALL US

+91 9907260741

ছাত্র-ছাত্রীদের জন্য

মাত্র **59 টাকায়** সংগ্রহ
করে নিতে পারবে!

ENGLISH-B

Class XII Semester 4

Model Question

Section A (for two mark question)

2x5-10

1. Answer any two out of four questions. (2x2)

- What was Alice doing when she first noticed the white rabbit?
- Why did Alice hesitate before drinking from the bottle "DRINK ME"?
- What did the wounded man ask the king for? Why?
- Why did the wounded man want to take revenge on the king?

2. Answer any two out of four questions. (2x2)

- What does the hawk symbolize in the poem *Hawk Roosting*?
- "I hold creation in my foot" explain the idea behind this comment.
- What does the "bare ruined choirs" refer to?
- If the gradual warming trend continues to increase, what change will be observed in the streets and lawns of the city?

3. Answer any one out of two questions. (2x1)

- Simple: Failing in his attempt, he tried again. (Turn into a complex sentence)
- When the rain stopped, the children ran out to play in the garden happily. (Split into simple sentences)

ENGLISH-B**Class XII Semester 4****Section B (for three mark question)****3x1=3**

4. Answer any one out of two questions.

A) She said, "I was reading this novel yesterday."

She said that she _____ reading that novel the _____ day.

(Fill in the blanks using indirect speech)

B) He jumped _____ the river and swam _____ the other side
_____ ease.

(Fill in the blanks with appropriate articles and prepositions)

Section C (for five mark question)**5x1=5**

5. Answer any one out of two questions.

A) "In the big world, the old people do be leaving things after them for their sons and children, but in this place it is the young men do be leaving things behind for them that do be old."

Questions:

a) Who speaks these words and to whom? (2)

b) What is the significance of this statement in the play? (3)

B) Describe the character of Maurya and her role as a tragic mother. (5)

ENGLISH-B

Class XII Semester 4

Section D (for six mark question)

6x2=12

6. Answer any one out of two questions.

- A) How did the wounded man become the king's friend? What made him change his attitude? (2+4)
- B) Describe the hall that Alice finds after her fall. (6)

7. Answer any one out of three questions

- A) "I sit in the top of the wood, my eyes closed."
- a) What is the hawk doing in this line? (2)
- b) What does "eyes closed" suggest about his confidence? (2)
- c) How does this line set the tone for the poem? (2)
- B) "Which by and by black night doth take away, Death's second self, that seals up all in rest."
- a) How is "black night" personified here? (2)
- b) What does "Death's second self" refer to? (2)
- c) How do these lines reinforce the theme of mortality? (2)
- C) Discuss the central theme of environmental destruction and human negligence in the poem. (6)

ENGLISH-B**Class XII Semester 4****Section E (for ten mark question)****10x1=10**

8. Answer any one out of two questions.

A) Write an essay on

The Importance of Time Management for Students. (Within 150 words) (10)

OR

Is technology making us lazy? Discuss.

(Within 150 words)

B) Write any one email out of two questions and one blog out of two questions.

i. You are a student of class XII. Write an email to the Principal of your school complaining about poor sanitation and hygiene in the school washrooms. (Within 75 words) (5)

OR

Write an email to your teacher thanking him/her for motivating you throughout the year. (Within 75 words)

ii. Write a blog on “The Role of Artificial Intelligence in Our Future.” (5)

OR

Write a blog on “The Dangers of Junk Food.”

**ENGLISH-B****Class XII Semester 4****Model Question****Section A (for two mark question)****2x5=10****1. Answer any two out of four questions. (2x2)**

- A) What did Alice try to do to keep herself from feeling lonely while falling?
- B) What was unusual about the Rabbit's behaviour that surprised Alice?
- C) How did the king make peace with his enemy?
- D) What did some learned men suggest about knowing the right time for every action?

2. Answer any two out of four questions. (2x2)

- A) What does the hawk mean by "the earth's face upward for my inspection"?
- B) What does the line "Which by and by black night doth take away" convey?
- C) What message about mortality does the poet convey through the imagery of the setting sun?
- D) What does the poet mean when he says "the future is melting"?

3. Answer any one out of two questions. (2x1)

- A) Because he was tired, he took some rest. (Turn into a simple sentence)
- B) The book which you lent me is very interesting.

(Split into simple sentences)

ENGLISH-B**Class XII Semester 4****Section B (for three mark question)****3x1=3****4. Answer any one out of two questions.****A) He said, "I will call you tomorrow."**

He said that he _____ me the next day.

(Fill in the blanks using indirect speech)

B) There was _____ knock _____ the door _____ midnight. (Fill in the blanks with appropriate articles and prepositions)**Section C (for five mark question)****5x1=5****5. Answer any one out of two questions.****A) "It's little the like of him knows of the sea... Bartley will be lost now, and let you call in Eamon and make me a good coffin out of the white boards."****a) Who is the speaker and who is being spoken to? (2)****b) What does the statement reveal about the speaker's state of mind and the theme of fate? (3)****B) "No man at all can be living forever, and we must be satisfied."****a) Who says this line and at what moment? (2)****b) How does this line summarize the message of the play? (3)**

Class 12 **ENGLISH** 4TH Semester Suggestion Notes সংগ্রহ করুন

সম্পূর্ণ PDF ইবুকটি
পেয়ে যান **EduTips**
স্টোর থেকে!



SCAN ME



**LIMITED
OFFER**



store.edutips.in



Contact Us

+91 8062179966



CALL US

+91 9907260741

ছাত্র-ছাত্রীদের জন্য
মাত্র 40 টাকায় সংগ্রহ
করে নিতে পারবে!

ENGLISH-B

Class XII Semester 4

Section D (for six mark question)

6x2=12

6. Answer any one out of two questions.

- A) a) How did the king come to know that the wounded man was his enemy? (2)
- b) What was the man's plan before being wounded? (2)
- c) How did the incident change both of them? (2)

- B) a) How does the author introduce Alice at the beginning of the story? (2)
- b) What was she doing before she noticed the White Rabbit? (2)
- c) How does this opening scene prepare the reader for adventure? (2)

7. Answer any one out of three questions.

- A) a) What does the poem tell us about the hawk's character? (3)
- b) What does the phrase "no sophistry in my body" mean? (3)

B) "That time of year thou mayst in me behold

When yellow leaves, or none, or few, do hang

Upon those boughs which shake against the cold,

Bare ruined choirs where late the sweet birds sang."

- a) What "time of year" is the poet referring to here? (2)
- b) Explain the imagery of "bare ruined choirs." (2)

ENGLISH-B**Class XII Semester 4**

- c) How does this image relate to the theme of the poem? (2)
- C) a) How does the poet describe humanity's attitude towards nature? (2)
- b) What tone does he use to criticize this attitude? (2)
- c) What lesson does the poet want readers to learn? (2)

Section E (for ten mark question)**10x1=10****8. Answer any one out of two questions.**

A) Write an essay on

“Education as the Key to Success.

(Within 150 words)

Write an essay on “Life Without the Internet.” (Within 150 words)

OR

B) Write any one email out of two questions and one blog out of two questions.

- i. You are Rahul Sen, a resident of Green Park, Kolkata. Write an email to the Municipal Officer complaining about the non-functioning street lights in your area and requesting immediate repair. (Within 75 words) (5)

OR

Write an email to your friend Suresh telling him about your plans after Class XII board exams. (Within 75 words)



ENGLISH-B

Class XII Semester 4

- ii. Write a blog on “Go Green: Small Steps for a Big Change” (Within 75 words) (5)

OR

Write a blog on “The Importance of Sports in Student Life”

EduTips

**QUESTIONS FOR QUESTION BANK****Prose****For 2 marks questions****Unit: Down the Rabbit-Hole**

1. Why did Alice peep into the book her sister was reading?
2. What was Alice's opinion about the book her sister was reading?
3. Why did Alice become curious about the Rabbit?
4. What happened after Alice drank the content of the bottle?
5. What did Alice find after she opened the door with the golden key?

Unit: Three Questions

1. To whom did the three questions occur?
2. Why was the bearded man an enemy of the Tsar?
3. What did the hermit answer to the third question of the Tsar?
4. "Forgive me," said the bearded man'——Whom was this told to?
Was the bearded man forgiven?
5. What did the bearded man promise the Tsar?

ENGLISH-B**Class XII Semester 4****Synthesis of sentences. [For 2 marks questions]**

1. I have no dictionary, so I can not look up the meaning of the word.
(Turn the sentence into a simple sentence)
2. The rich man keeps some dogs to guard his house. The dogs are well trained.
(Turn the sentence into a simple sentence)
3. He says something. There is much truth in it.
(Turn into a complex sentence)
4. God made the country. Man made the town.
(Turn into a compound sentence)
5. Garbage causes pollution. It may be used as a source of energy.
(join the sentences using adjective clause)
6. The farmer had a hen. The hen laid a golden egg every day. (Join the sentences into a single sentence)
7. Finding his mother absent the child began to cry. (Turn the sentence into a compound sentence.)
8. I waited for my brother. I waited till his arrival. (Join this sentences into a single sentence)
9. He heard the news and immediately left in a hurry. (Turn the sentence into a complex sentence)
10. Tina took her meal and went to school. (Turn into a simple sentence using participle)

ENGLISH-B

Class XII Semester 4

Fill in the blanks with appropriate articles and prepositions: [For 3 marks]

1. Once upon a time there was _____ boy who dreamed _____ making great building. He made friendship _____ a man whose ambition in life was to design a church.
2. The Transport Minister has contributed _____ one-man committee to look _____ the demand of transport operations for _____ increase of fares.
3. In India the first oil well was sunk _____ Borbhil, later known as Digboi in Assam _____ 19 October, 1889. The Digbol refinery is _____ oldest running refinery in the country.
4. _____ the Bose Institute _____ great experimenter was our guide. Through all _____ afternoon we followed him from marvel to marvel.
5. Like most kings, Ashoka was _____ conqueror but after he became Buddhist, he decided to preach Buddhism, not by force, but _____ preaching.

Complete the indirect speech of the sentence by filling in the blanks with appropriate words: (for 3 marks question)

1. Direct speech: Mithai said to Sounak, "Will you play together now?"

Indirect speech: Mithai _____ Sounak _____ he _____ play together _____

ENGLISH-B

Class XII Semester 4

2. Direct speech: The ticket collector said to the passenger, "Show your ticket please."
Indirect speech: The ticket collector _____ the passenger _____ show _____ ticket.

3. Direct speech: The commentator said, "What a brilliant catch it is!"
Indirect speech: The commentator, _____ in joy that it _____ a _____ brilliant catch.

4. Direct speech: Mother said to me, "May the Almighty bless you."
Indirect speech: Mother _____ that the Almighty _____ me _____

5. Direct speech: The farmer said to his son, "I want to sell the land."
Indirect speech: The farmer _____ his _____ that he _____ to sell the land.

Split the sentence into two simple sentences: [For 2 marks question]

1. A dozen of trees at Rabindra Sarobar have fallen prey to lac insects and will have to be axed.
2. The train stopped at a station that had no town.
3. Oscar-winning singer Bob Dylan skipped the Nobel Prize Ceremony
4. Babylonians wrote astronomical observations on bricks of clay.

ENGLISH-B**Class XII Semester 4**

5. Doctors have warned people against stepping out early in the morning when concentration of diesel exhaust hangs low in the air.

Correct the error in the following sentences: [For 2 marks question]

1. We drinks tea in the morning.
2. Tagore was the first in receiving Nobel Prize from India.
3. A team of doctors are selected to attend the conference.
4. I shall be promote next year.
5. I prefer coffee than tea.

For two marks question

Unit: Hawk Roosting

1. What does the hawk mean when it says, "I sit in the top of the wood, my eyes closed"?
2. How does the hawk describe its control over nature in the poem?
3. What is the tone of the poem "Hawk Roosting"?
4. Explain the significance of the line, "The sun is behind me."
5. What do the hawk's words reveal about its personality?

ENGLISH-B

Class XII Semester 4

Unit: *Sonnet 73*

1. What season of the year does the poet use as a metaphor for old age?
2. Explain the meaning of the line "Bare ruined choirs where late the sweet birds sang."
3. How does the imagery of fire contribute to the theme of the poem?
4. What does the poet mean by "Death's second self"?
5. How does the poem express the relationship between love and mortality?

Unit: *The Greenhouse Effect*

1. How does the poem reflect the theme of human irresponsibility?
2. What role does nature play in the poem "The Greenhouse Effect"?
3. How does the poet make the reader feel responsible for climate change?
4. What warning does the poet give about the future of the planet?
5. What is the overall message of the poem?

For 6 marks question

Unit: *Hawk Roosting*

1.
 - (a) What does the hawk symbolize in the poem? (2)
 - (b) How does the poet convey the hawk's arrogance through language? (2)

ENGLISH-B

Class XII Semester 4

- (c) What is the overall message of the poem? (2)
- 2.
- (a) Describe the hawk's attitude towards power. (2)
- (b) How does Hughes use imagery to show control and dominance? (2)
- (c) What impression do you get of the hawk's personality? (2)
- 3.
- (a) Explain the significance of the line "I kill where I please because it is all mine." (2)
- (b) How does this line reflect the hawk's sense of superiority? (2)
- (c) What poetic techniques enhance this idea? (2)
- 4.
- (a) How does the hawk view nature and creation? (2)
- (b) What does the poem suggest about authority and control? (2)
- (c) How does the tone of the poem support this theme? (2)
- 5.
- (a) Discuss two images that show the hawk's dominance. (3)
- (b) How do these images help in understanding the poet's message?

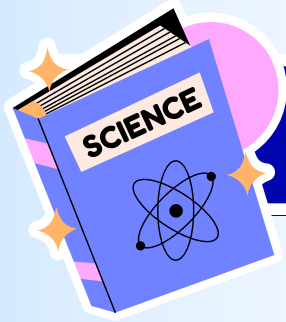
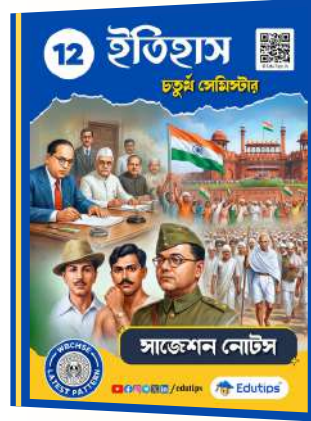
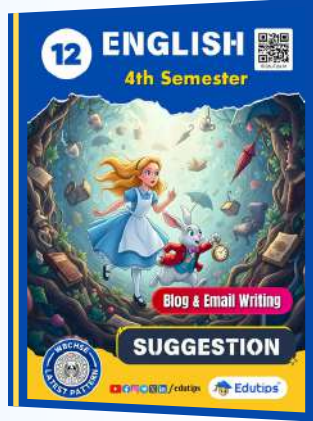


উচ্চমাধ্যমিক 4th সেমিস্টার



PREMIUM

HS 2026 পরীক্ষার সেরা প্রস্তুতি সাজেশন



বোর্ড পরীক্ষা সাজেশন & প্র্যাকটিস

Science বিভাগ: Physics, Chemistry, Math, Biology



CALL US

+91 8062179966



Contact Us

+91 9907260741



© EduTips.in

এখনই সংগ্রহ করুন

store.edutips.in



ENGLISH-B**Class XII Semester 4****Unit: Sonnet 73**

1.

- (a) What season of the year does the poet compare himself to? (2)
- (b) How does this image reflect the poet's stage of life? (2)
- (c) What feeling does the poet wish to express through this comparison? (2)

2

- (a) Explain the imagery of the "bare ruined choirs." (2)
- (b) How does this image contribute to the poem's tone of decay? (2)
- (c) What emotion does it evoke in the reader? (2)

3.

- (a) What does the image of "twilight" signify in the poem? (2)
- (b) How does it relate to the theme of aging? (3)
- (c) What message does Shakespeare convey through it? (2)
- (a) How does Shakespeare use the image of fire in the final quatrain? (2)
- (b) What does the "ashes of his youth" symbolize? (2)
- (c) How does this image develop the theme of mortality? (2)

ENGLISH-B

Class XII Semester 4

- 5.
- (a) Identify two images of decline used in the poem. (3)
 - (b) Explain how these images reinforce the central idea of time and love. (3)

Unit: The Greenhouse Effect

- 1.
- (a) What does the poet mean by the term “Greenhouse Effect”? (2 marks)
 - (b) How does Carl Dennis use irony to convey the message of the poem? (2 marks)
 - (c) What warning does the poet give to mankind through this poem? (2 marks)
- 2.
- (a) Describe how human activities have contributed to the Greenhouse Effect. (2)
 - (b) What attitude of people towards nature is criticized in the poem? (2 marks)
 - (c) What solution does the poet suggest to save the Earth?
- 3.
- (a) How does the poet create awareness about environmental pollution in the poem? (3)
 - (b) What message does Carl Dennis want to convey to the readers? (3 marks)

ENGLISH-B

Class XII Semester 4

- 4.
- (a) What tone does the poet use while describing the future of the Earth? (2 marks)
 - (b) How does the poet's language help in emphasizing the seriousness of the problem? (2 marks)
 - (c) What emotions does the poem evoke in the reader? (2 marks)

- 5.
- (a) How does Carl Dennis blend science with poetry in 'The Greenhouse Effect'? (3)
 - (b) Comment on the relevance of the poem in today's world. (3 marks)

Essay Writing (within 150 words)

1. Write an essay on the impact of social media on youth. (10 Marks-Content: 5, Organisation: 3, Accuracy: 2)
2. Discuss the importance of environmental conservation in today's world. (10 Marks - Ideas: 4, Structure: 3, Language: 3)
3. Write an essay on "The Role of Education in Shaping the Future of a Nation."
4. Write an essay on "Artificial Intelligence: Boon or Bane?"
5. Write an essay describing the advantages and disadvantages of online learning.
6. Write an essay on "Women Empowerment and Gender Equality in Modern Society."
7. Write an essay on "The Importance of Mental Health Awareness."

ENGLISH-B

Class XII Semester 4

8. Write an essay on “Climate Change and Its Effects on Our Planet.”
9. Write an essay on “The Value of Time in a Student’s Life.”
10. Write an essay on “India’s Progress in Science and Technology.”

Blog writing (within 75 words)

1. Write a blog on “Travelling: The Best Form of Education.”
2. Write a blog on “Mobile Phones: A Necessity or a Distraction?”
3. Write a blog on “The Growing Popularity of E-Sports among Teenagers.”
4. Write a blog on “Why Volunteering Should Be Part of School Life.”
5. Write a blog on “Books vs Screens - Which Is Better for Learning?”
6. Write a blog on “Overcoming Failure: The Key to Success.”
7. Write a blog on “Simple Ways to Live a More Eco-Friendly Life.”
8. Write a blog on “The Importance of Art and Creativity in Education.”
9. Write a blog on “Internet Addiction and Its Impact on Students.”
10. Write a blog on “Digital India: Opportunities and Challenges.”

ENGLISH-B

Class XII Semester 4

A) RIDERS TO THE SEA (J.M. SYNGE)

5 marks questions

- 1) Describe Maurya's character and her response to the tragedies that befall her family.
- 2) Discuss the role of the sea in the play as a symbol of nature and fate.
- 3) How does Synge depict the theme of human suffering and endurance in the play?
- 4) Explain the significance of the play's title, "Riders to the Sea."
- 5) Analyze the role of superstition and religion in the lives of the islanders.
- 6) How does Synge use dialogue and simple language to convey deep emotions?
- 7) Describe the character of Bartley and his importance in the story.
- 8) Examine the play as a tragedy of human endurance against the forces of nature.
- 9) How does the play reflect the life and struggles of people on the Aran Islands?
- 10) Discuss the ending of the play and how it reinforces the theme of inevitability.

B) DRAFTING EMAIL (75 words)

5 marks questions

- 1) Email to a Customer Care Executive complaining about receiving a defective mobile phone ordered online.
- 2) Email to the Online Retailer (e.g., Amazon/ Flipkart) requesting replacement or refund for a damaged laptop received.
- 3) Email to the Examination Controller requesting correction of spelling error of your name in the admit card.
- 4) Email to the class teacher requesting guidance for a project or assignment.

ENGLISH-B

Class XII Semester 4

- 5) Email to the Traffic Department requesting installation of traffic signals at a dangerous junction.
- 6) Email to the sanitation department requesting maintenance of water drains or sewage systems.
- 7) Email to a tour operator requesting details about a holiday package during the Puja vacation.
- 8) Email to a tour operator reporting discrepancy between promised and provided amenities during a tour.
- 9) Email to the Editor of a Newspaper highlighting poor quality of newspaper supplements or graphics.
- 10) Email to the Editor of a Newspaper on The Rise of Mental Health Awareness Among Teenagers.

গুরুত্বপূর্ণ আপডেট পরীক্ষার সাজেশন

হোয়াটসঅ্যাপে পেতে



স্ক্রিনশট নিয়ে, Scan করে
জয়েন হয়ে যাও!



edutips.in



Edutips



@ edutipsbangla

উচ্চমাধ্যমিক সেমিষ্টার প্রস্তুতি, নোট সাজেশন স্টাডি
মকটেস্ট পাবে: **EduTips App** যুক্ত হয়ে যেও!

